

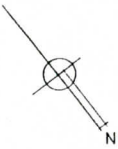
LANDS N/P OF
TWENTY FIRST POINT
COMPANY, GARDENLAND

LANDS N/P OF
FENLOW GARDEN INC.
(1816 / 499)

LANDS N/P OF
THOMAS P. & MARY ELLEN
REICHERT
(1176 / 2001)

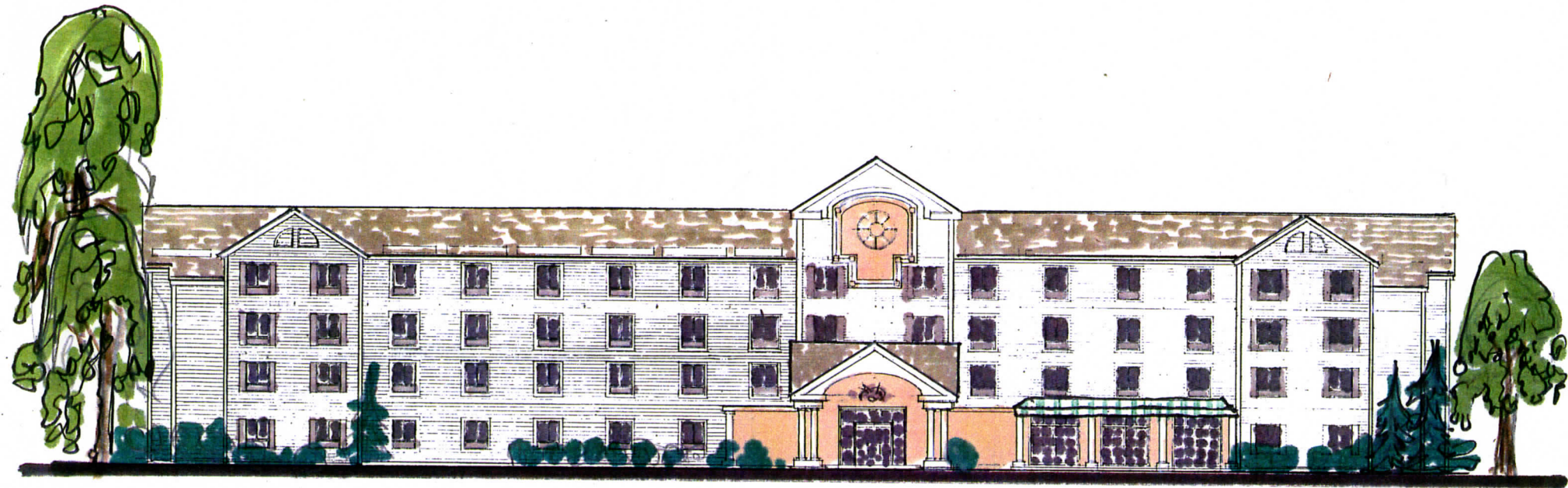
LANDS N/P OF
NICOLAS GEORGE
(679 / 302)

LANDS N/P OF
DELTA PROPERTIES
(1501 / 401)



WESTERN AVENUE RT 10

SITE PLAN
SCALE 1" = 40'



HOLIDAY INN EXPRESS

144 WESTERN AVENUE GUILDERLAND