

8/1/08
Add Trees

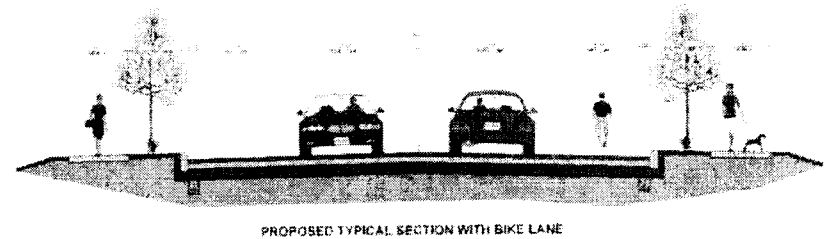
McKownville Corridor Study Summary of Findings



Pedestrian/Bicycle

Need: Enhancement of walking/cycling-based travel routes about the area.

Recommendations: Long-term plan for sidewalk improvements (replacements and new construction), development of a system of off-road trails/paths, bike route designations, intersection improvements and ordinance provisions for bike parking, pedestrian/bike-friendly street design.

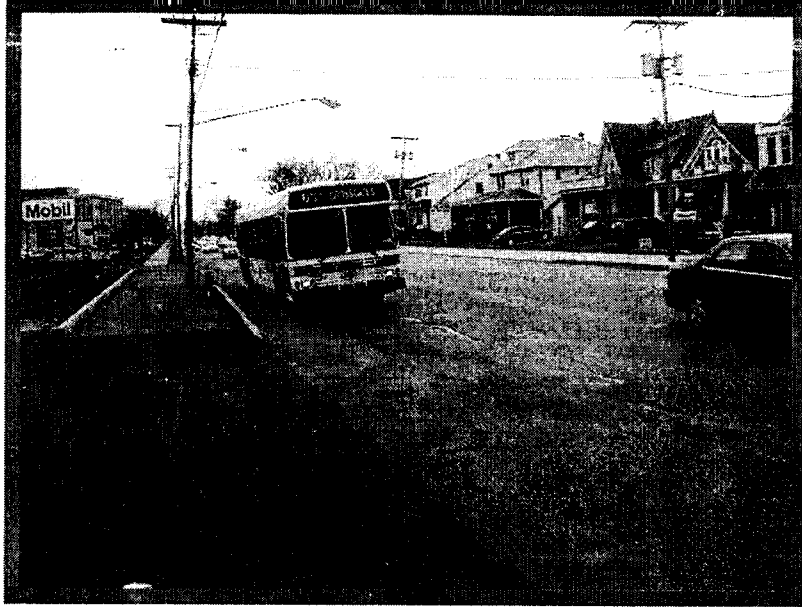


Neighborhood/Community Design

Needs: Physical design – streetscapes, off-road destinations and gateway treatments – that better promote local activity.

Recommendations: Corridor-length design themes and other physical improvements to highlight neighborhood settings, plus development of local recreational destinations such as the McKownville Reservoir area.

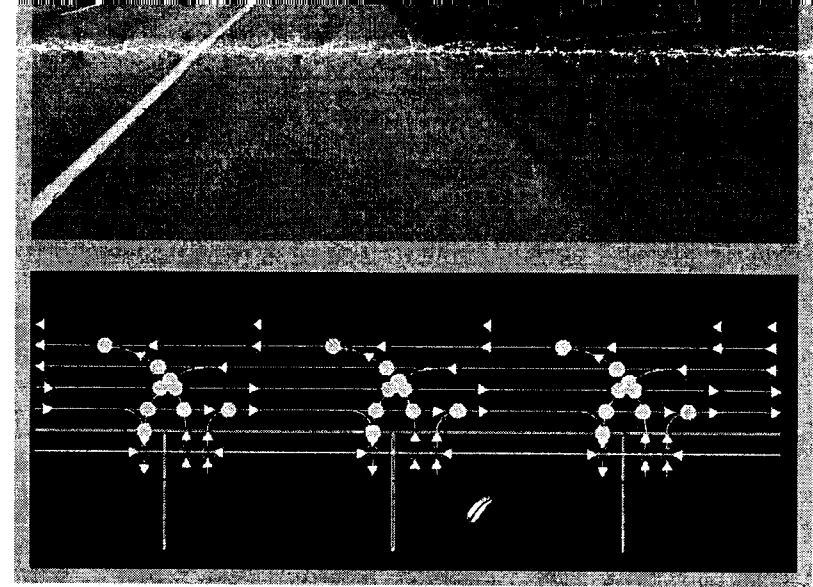




Public Transportation

Needs: More convenient access to public transit routes, more comfortable waiting areas, and enhancement of intersystem travel opportunities to reduce motor vehicle traffic.

Recommendations: Installation of several new bus shelters along Western Avenue, using walking routes to bus stops as a key factor in prioritizing sidewalk projects, and enhancing CDTA-SUNY and CDTA-senior transportation links.



Conflict Points at the Three Driveways

Traffic Operations

Needs: Slow traffic down, make it more predictable (particularly to pedestrians and cyclists), and improve pedestrian and cyclist accommodation at intersections.

Recommendations: Install bulbouts at selected Western Avenue locations to reduce pedestrian crossing widths and motor vehicle speeds; pursue access management (driveway reductions, turn restrictions and the like) at several commercial driveways; prohibit right turns on red at major signalized intersections in the area; install bicyclist-accessible crossing buttons at Western/Church, and use an "all red" phase to give cyclists a chance to cross the Northway "slip ramp" lane before motor vehicle traffic proceeds through Western/Church.