

REAR OF LOTS
ON

TOTAL 206,272

HIGHLANDS (MCKOWN)
CLUB

FORMERLY COUNTRY CLUB

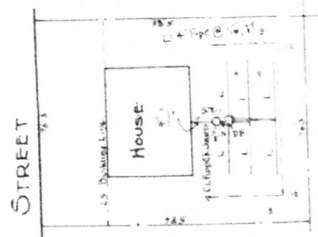
GLENWOOD HEIGHTS PART II

REVISED
MAP

OF
PARKWOOD HOMES
JAMES J. SMITH OWNER
NORTHERLY EXTENSION OF PARKWOOD ST
MCKOWNVILLE, TOWN OF GUILDERLAND
ALBANY CO., N.Y.

SCALE
1"=40'

1"=50' TYPICAL
1"=50' DISTRIBUTION BOX
1"=50' LIGHTER PERFORATED
1"=50' LUMBER BURNING PILE @ 10' x 10'



TYPICAL PLOT PLAN
Scaled 1/8"

○ P.P.C. □ STAKE ALL ANGLES 90° UNLESS SHOWN
FIELD BOOK NO. 104 45 of 42 18 70 70
COMP. L. 103; 104
● TEST POINTS: M.S. - 1/2" DIA. C.P. - CATCH BASIN
● CONCRETE MONUMENT

NEW YORK STATE DEPARTMENT OF HEALTH
ALBANY, N. Y. JULY 15, 1955

This is to certify that the proposed arrangements for water supply and sewage disposal for **Parkwood Homes Revised** were approved by the **TOWN OF GUILDERLAND** in accordance with plans on file in the office of the State Department of Health. Consent is hereby given to the filing of the map of **ALBANY** county in accordance with the provisions of Section 114 of the Public Health Law.

Ed. J. ...
DIRECTOR, BUREAU OF ENVIRONMENTAL SANITATION

OCT. 28, 1954 REVISED JULY 5, 1955

MADE BY THE ALBANY COUNTY ENGINEERS