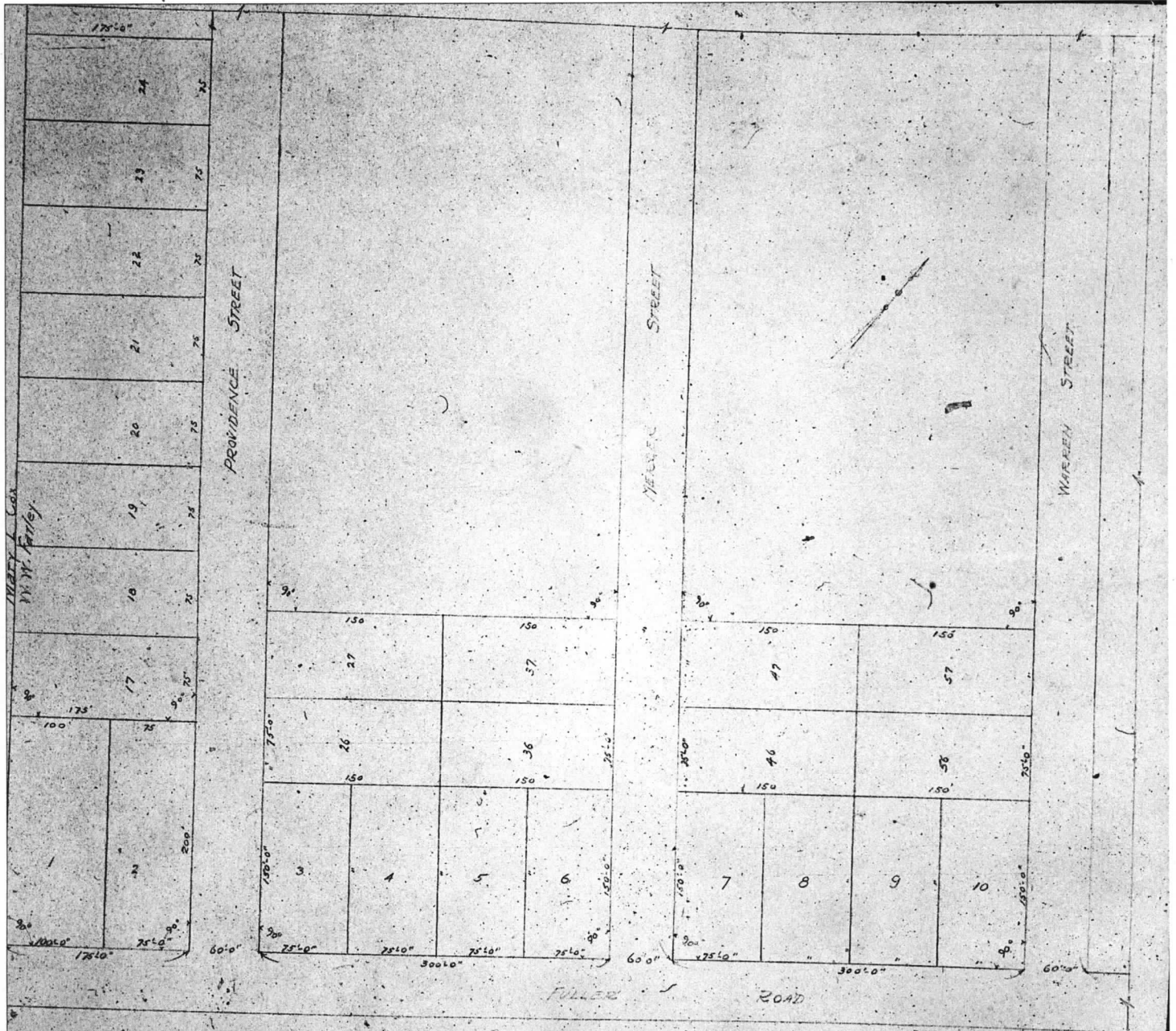


Bk 78 map 14



SCALE 50' = 1"

FILED  
 Oct 19 1936  
 Albany County  
 Clerk's Office

PROPERTY OF  
 W. W. FARLEY  
 FULLER ROAD

Lester C. Sherman, Surveyor Albany, N.Y. October 14, 1936

albany county Clerk  
 Book maps 78  
 14