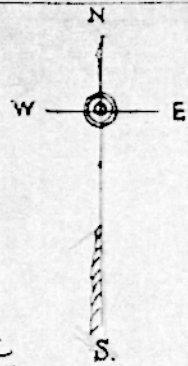
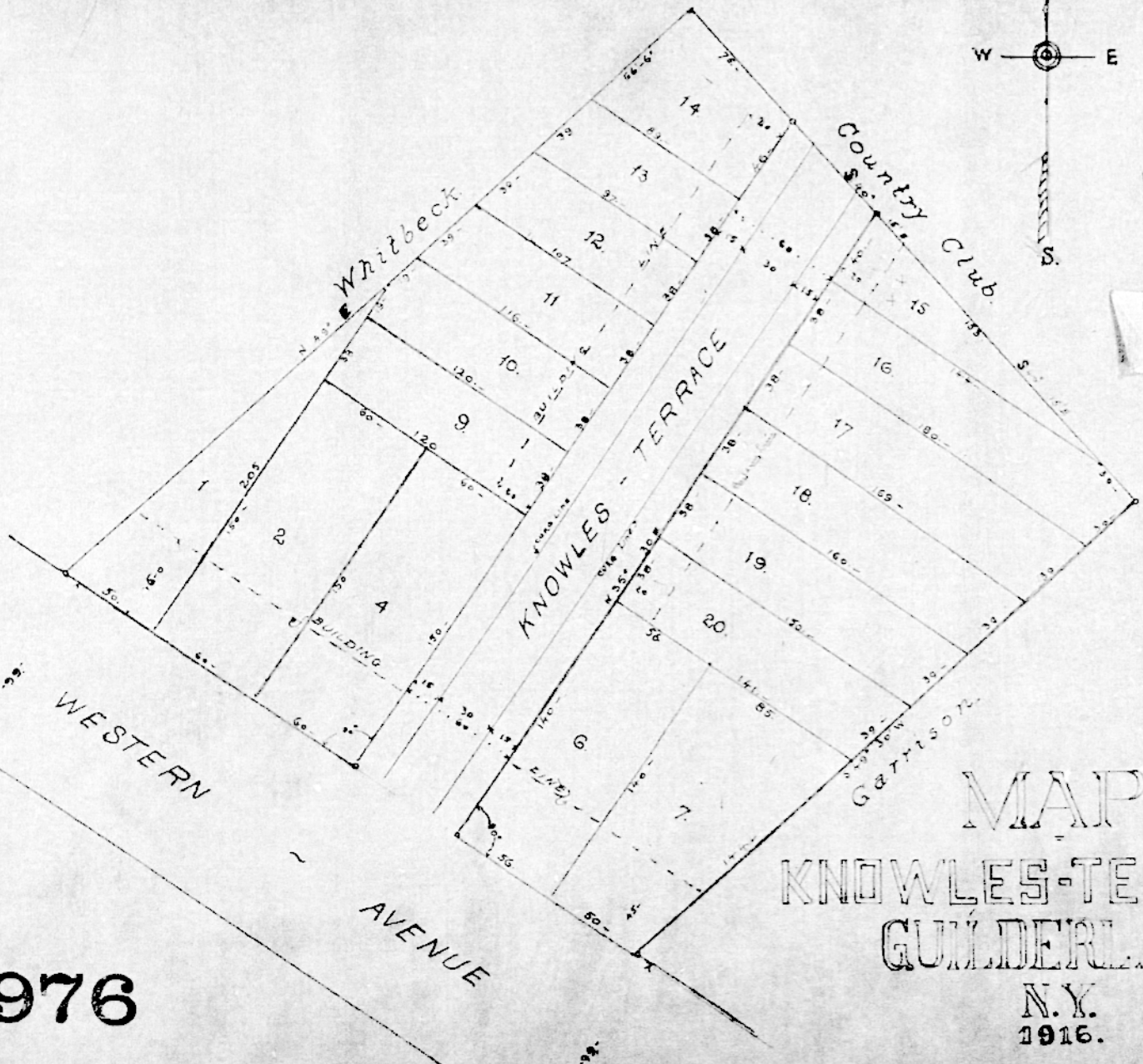


FILED IN
ALBANY COUNTY CLERK'S
OFFICE
1917 FEB 2 PM 2 21
ALBANY N.Y.



976
Dr 46

FILED Feb 2, 1917
Albany County
Clerk's Office



976

MAP
KNOWLES-TERRACE
GUILDERLAND
N.Y.
1916. (copy)

SCALE 40' = 1" INCH

WILLIAM R. KIMBLEY
CIVIL ENGINEER
ALBANY, N.Y.