

ALBANY COUNTY CLERK

1922 JUN 23 PM 4 69

ALBANY N.Y.

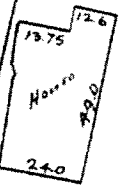
North Line of property Country
29.90

Club
90.25

Fence
67.10

67.0

West Line
397.0



Spring



237.0

East Line
208.50

Survey of property
belonging to
Charles Gemlich

Geo. J. Haru, C.E.
Apr. 11, 1921

Scale 30ft = 1 inch

1

2

3

4

5

6

7

43.75

43.75

107.50

90°

40.0

38.70

North

Line

of

Turnpike

Jan 23, 1922

Western Turnpike

994