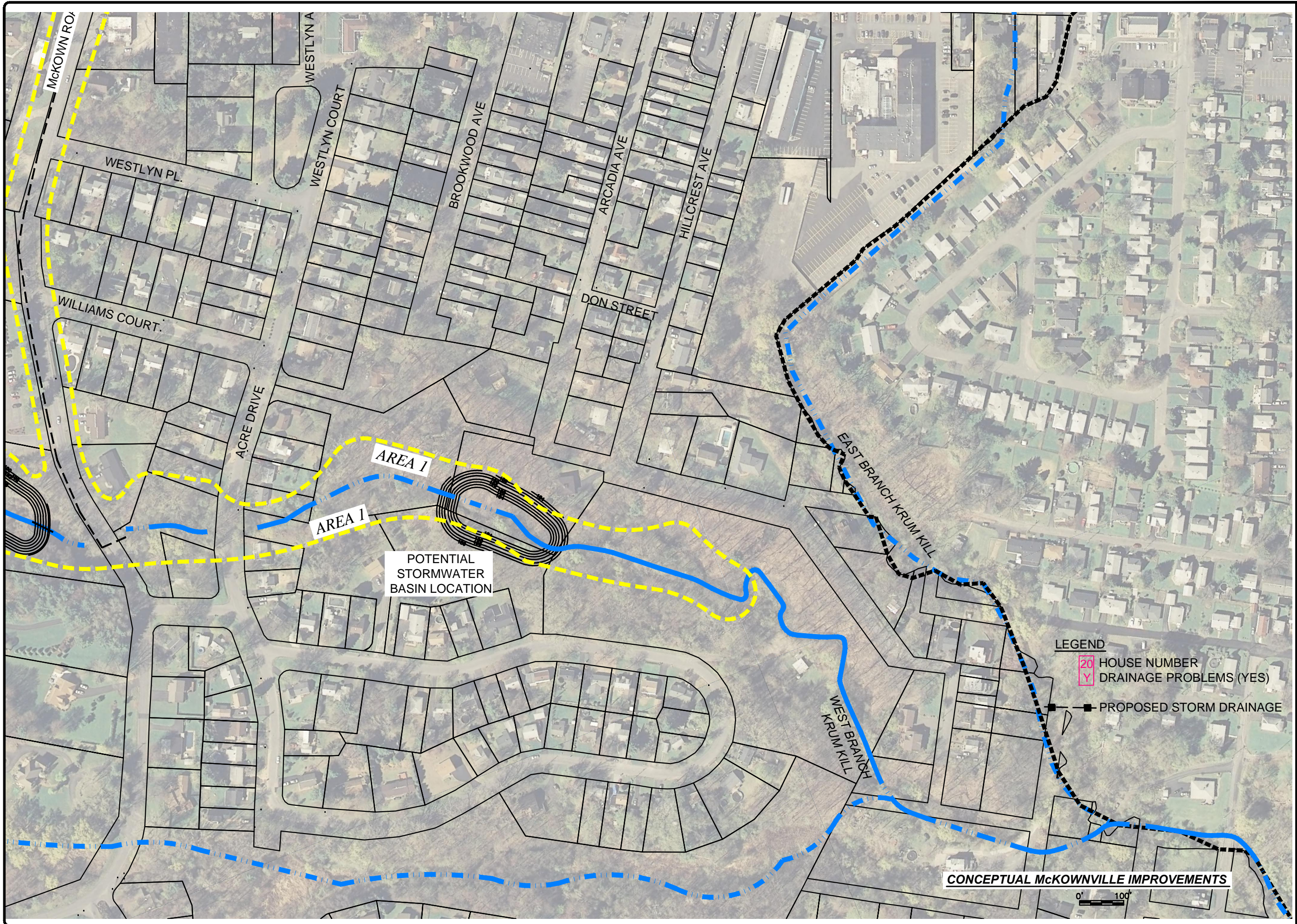


H:\Projects\Guilderland\McKownville storm sewer\McKownville\dwg\McKownville.dwg 6/8/2010 3:42:11 PM EDT



DATE: JUNE 2010  
 DRAWN BY:  
 SCALE:  
 REVIEWED BY:  
 PROJECT NO.:  
 FILE:

**DELAWARE ENGINEERING, P.C.**  
 CIVIL AND ENVIRONMENTAL ENGINEERING

8-12 DIETZ STREET, SUITE 303, ONEONTA, NY 13820 - 607.432.8073  
 25 MADISON AVENUE EXTENSION, ALBANY, NY 12203 - 518.462.1290  
 6 TOWNSEND STREET, WALTON, NY 13856 - 607.865.9254

NO.	DATE	REVISIONS DESCRIPTION

McKOWNVILLE DRAINAGE SYSTEM  
 TOWN OF GUILDERLAND, NY

**CONCEPTUAL  
 McKOWNVILLE  
 IMPROVEMENTS**