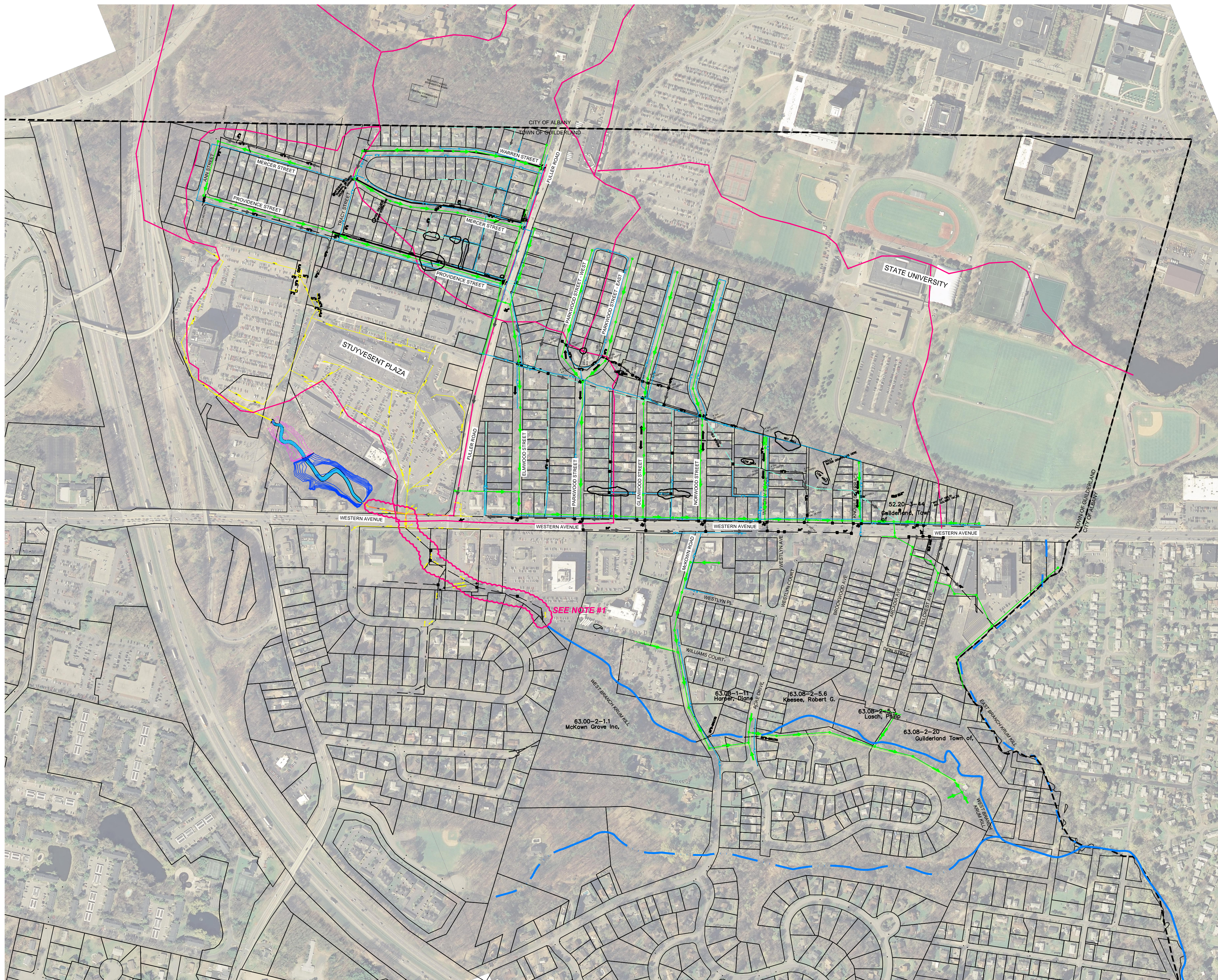


H:\Projects\Guilderland\McKownville_storm_sewer\McKownville.dwg 6/8/2010 3:42:11 PM EDT



- LEGEND**
- EXISTING CATCH BASIN LOCATIONS
 - EXISTING STORM OUTFALL LOCATIONS
 - EXISTING SANITARY SEWER
 - EXISTING WATER MAIN
 - EXISTING STORM SEWER
 - DRAINAGE AREA
 - - - EXISTING CONTOURS (GOOGLE EARTH - 2007)
 - TAX MAP PARCELS (TOWN OF GUILDERLAND)

NOTE:
 1. This area needs additional investigation due to existing storm sewer lines are on private property with no easements.

EXISTING CONDITIONS MAP 0' 300'

DATE: JUNE 2010
 DRAWN BY:
 SCALE:
 REVIEWED BY:
 PROJECT NO.:

DELAWARE ENGINEERING, P.C.
 CIVIL AND ENVIRONMENTAL ENGINEERING
 8-12 DIETZ STREET, SUITE 303, ONEONTA, NY 13820 - 607.432.8073
 28 MADISON AVENUE EXTENSION, ALBANY, NY 12203 - 518.452.1280
 6 TOWNSEND STREET, WALTON, NY 13856 - 607.865.92354

NO.	DATE	DESCRIPTION

McKOWNVILLE DRAINAGE SYSTEM
 TOWN OF GUILDERLAND, NY

EXISTING CONDITIONS MAP