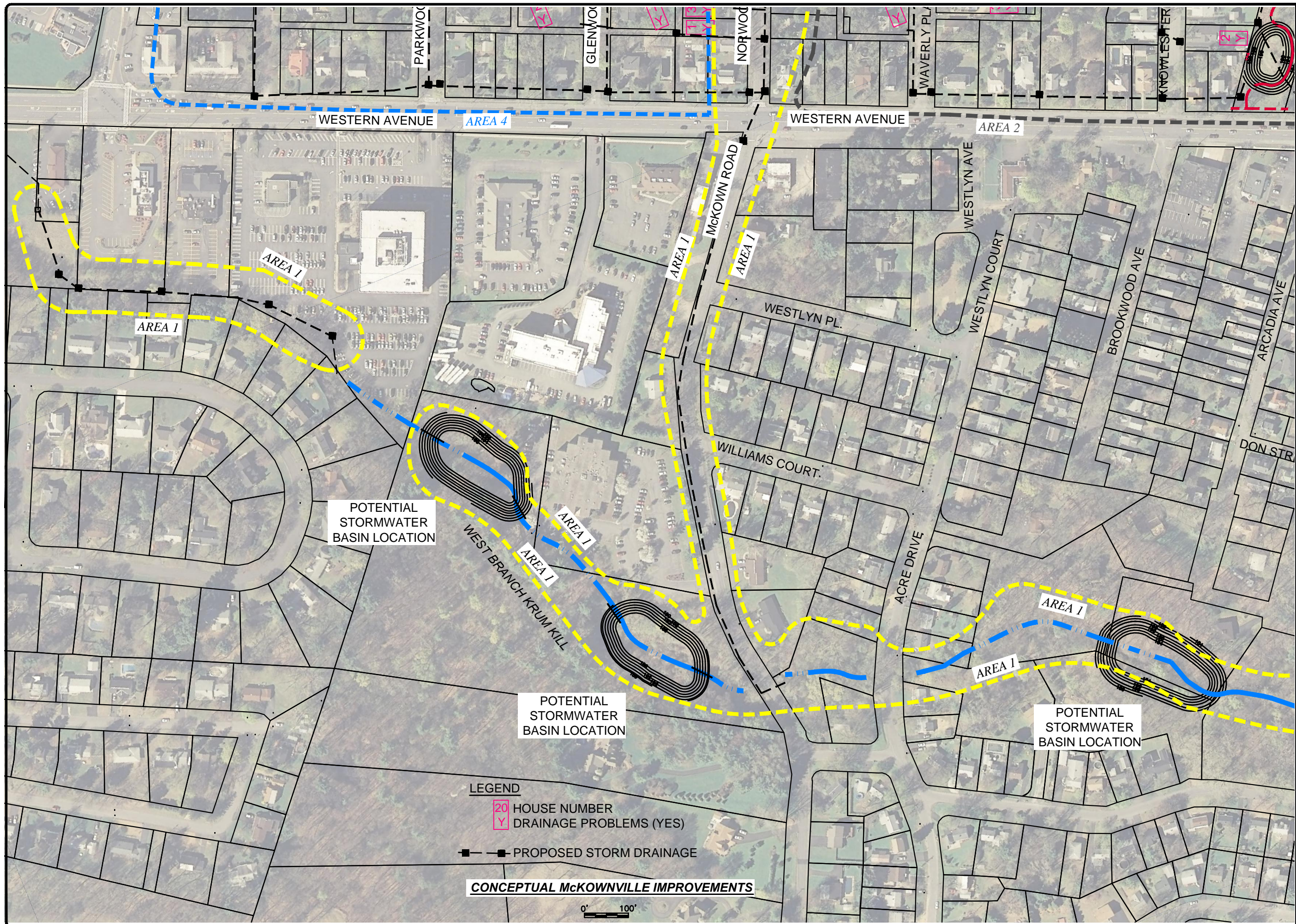


H:\Projects\Guilderland\McKownville storm sewer\McKownville\dwg\McKownville.dwg 6/8/2010 3:42:11 PM EDT



- LEGEND**
- 20 HOUSE NUMBER
 - Y DRAINAGE PROBLEMS (YES)
 - PROPOSED STORM DRAINAGE

CONCEPTUAL MCKOWNVILLE IMPROVEMENTS

0' 100'

DATE: SEPT. 2009
 DRAWN BY:
 SCALE:
 REVIEWED BY:
 PROJECT NO.:
 FILE:

DELAWARE ENGINEERING, P.C.
 CIVIL AND ENVIRONMENTAL ENGINEERING

8-12 DIETZ STREET, SUITE 303, ONEONTA, NY 13820 - 607.432.8073
 28 MADISON AVENUE EXTENSION, ALBANY, NY 12208 - 518.452.1290
 6 TOWNSEND STREET, WALTON, NY 13856 - 607.865.9254

REVISIONS	
NO.	DESCRIPTION

MCKOWNVILLE DRAINAGE SYSTEM
 TOWN OF GUILDERLAND, NY

CONCEPTUAL MCKOWNVILLE IMPROVEMENTS