

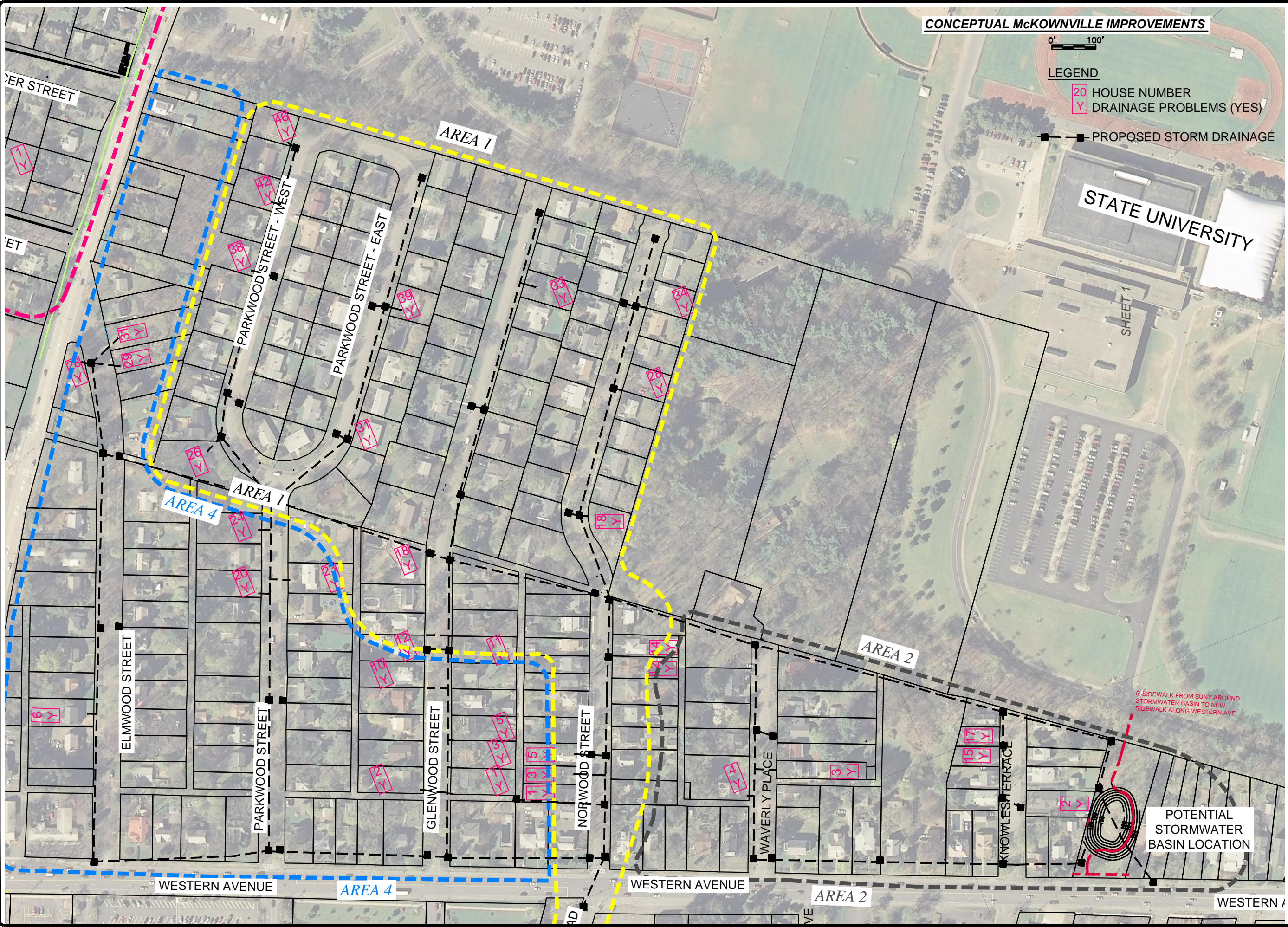
H:\Projects\Guilderland\McKownville storm sewer\McKownville.dwg 6/8/2010 3:42:11 PM EDT

CONCEPTUAL McKOWNVILLE IMPROVEMENTS

0' 100'

LEGEND

- 20 HOUSE NUMBER
- Y DRAINAGE PROBLEMS (YES)
- PROPOSED STORM DRAINAGE



STATE UNIVERSITY

SHEET 1

POTENTIAL STORMWATER BASIN LOCATION

5' SIDEWALK FROM SUNY AROUND STORMWATER BASIN TO NEW SIDEWALK ALONG WESTERN AVE.

DATE: SEPT. 2009
 DRAWN BY:
 SCALE:
 REVIEWED BY:
 PROJECT NO.:
 FILE:

DELAWARE ENGINEERING, P.C.
 CIVIL AND ENVIRONMENTAL ENGINEERING
 8-12 DIETZ STREET, SUITE 303, ONEONTA, NY 13820 - 607.452.8073
 1000 W. STATE STREET, WATSONVILLE, CA 95076 - 408.852.1290
 6 TOWNSEND STREET, WALTON, NY 13866 - 607.865.9294

NO.	DATE	REVISIONS DESCRIPTION

McKOWNVILLE DRAINAGE SYSTEM
 TOWN OF GUILDERLAND, NY

CONCEPTUAL McKOWNVILLE IMPROVEMENTS