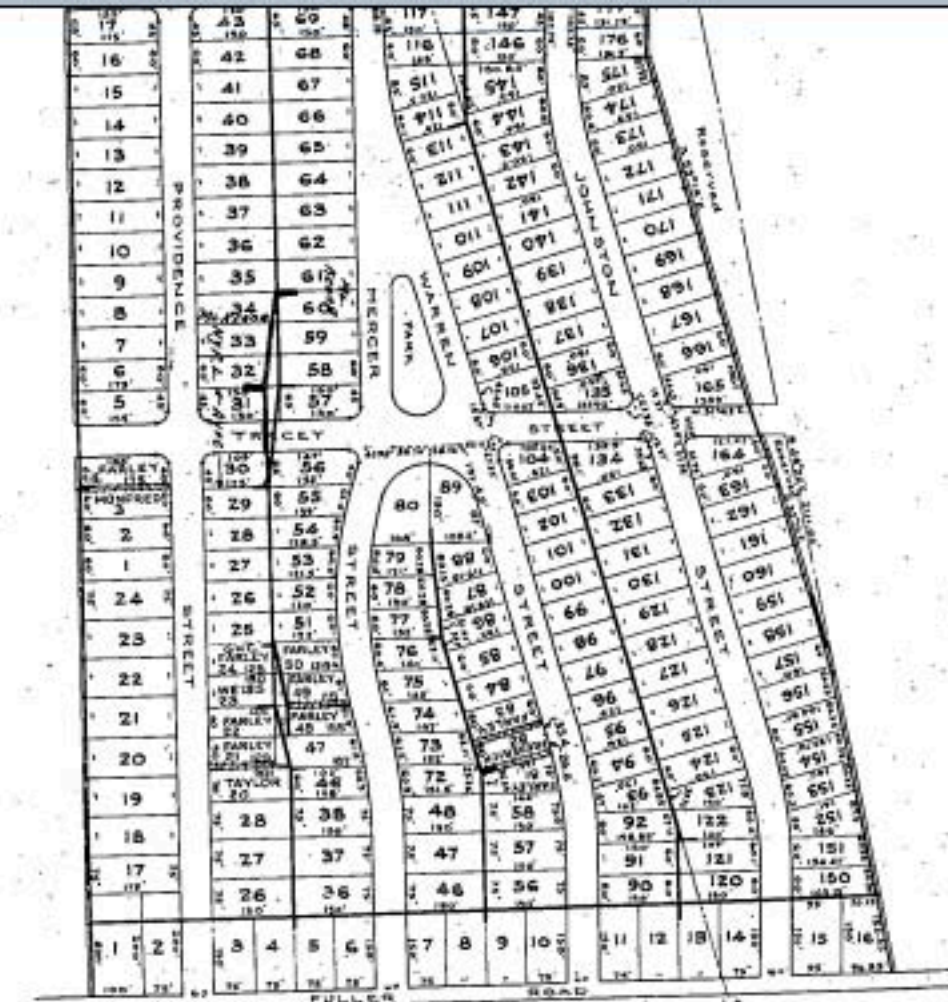




EASEMENT NO. 2-6554, B  
 LOCATION:  
 COUNTY: ALBANY  
 CITY: ALBANY  
 TOWN: COLUMBIAN  
 POLICE DISTRICT: 10  
 USE: RESIDENTIAL

NO.	DESCRIPTION	DATE	RECORD NO.	LIBER	PAGE	REMARKS
1	WOOD EASEMENT LINES	10/11/19	100	1170	37	
2	CHANGED LOT - 81-28	10/11/19	100	1170	37	
3	23 6 49	10/11/19	100	1170	37	
4	ADDED US EASEMENTS	10/11/19	100	1170	37	

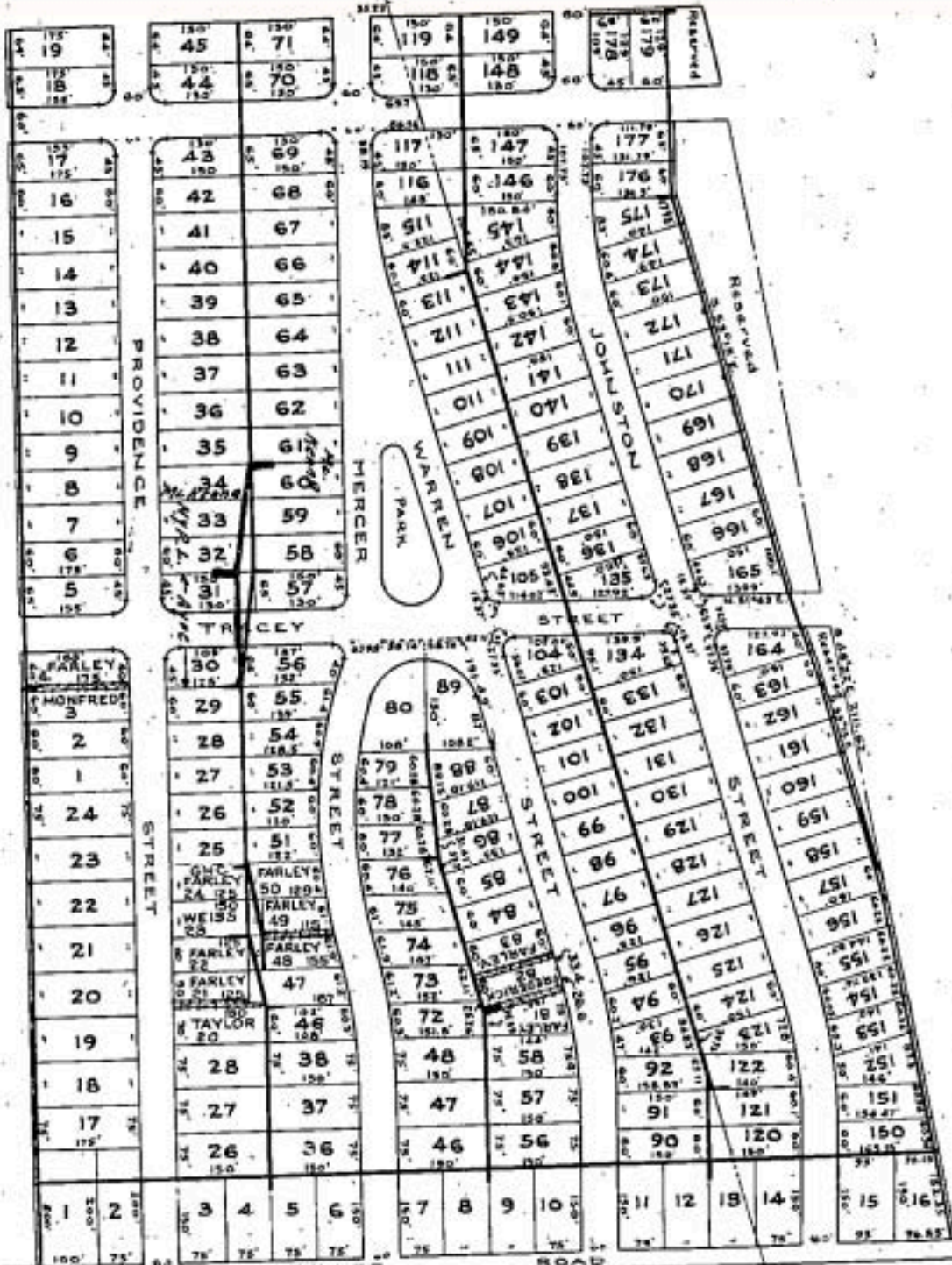
LINE NO.	ALTERNATION	CHANGES	COMPLETED	STARTED	APPROVED
4					
5					
6					



NEW YORK POWER & LIGHT CORP  
 DISTRIBUTION  
 ALBANY DISTRICT  
 GARDEN PARK ESTATES - EASEMENT  
 SCALE: 1"=200'

DATE	BY	FOR	APPROVED
7/1/28	W. J. ...	...	...

MAP NO. 100-325-38  
 G-933



ELMWOOD

CITY OF ALBANY  
TOWN OF SOUTH