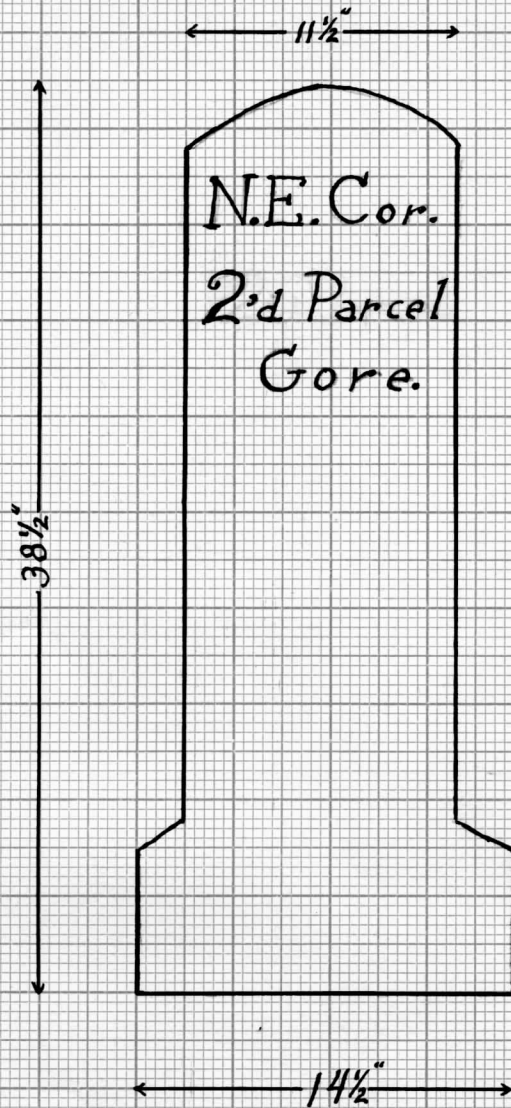


Aug. 4, 1952



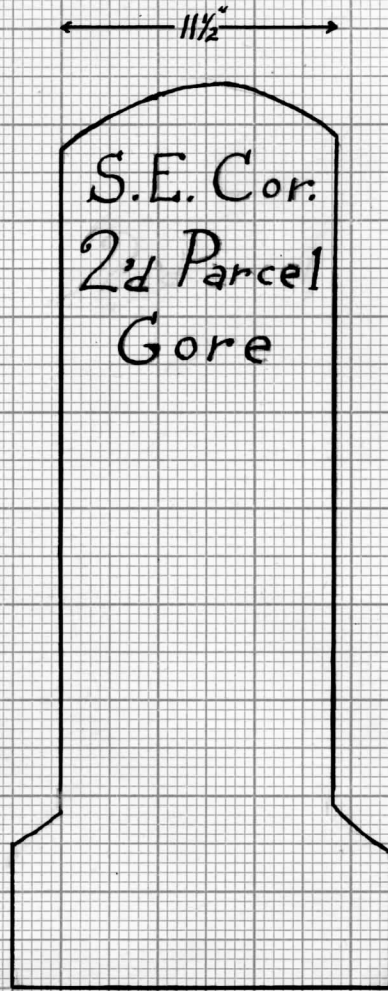
Reverse

5 in. thick

Obverse

N.W. Cor.
1st Parcel
Gore

Dec. 28, 1952



S.E. Cor.
2^d Parcel
Gore

Reverse

5 in. thick

Obverse

S.W. Cor.
1st Parcel
Gore

stone located at rear of
McKownville Methodist
Church, directly north
and in line with Church
Road.

358-12
MADE IN U.S.A.
10 X 11"
THE 1/2 INCH
KEUFFE
USER CO.
KE