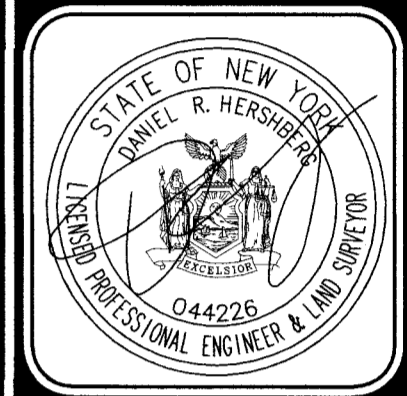


**HERSHBERG & HERSHBERG**  
 Consulting Engineers and Land Surveyors  
 18 Locust Street  
 Albany, New York 12203

ALTERATION OF THIS DOCUMENT EXCEPT BY A LICENSED PROFESSIONAL ENGINEER OR LAND SURVEYOR, IS ILLEGAL.



REVISIONS	DATE
GENERAL	5/6/09
FRASH COMPACTOR	5/10/10
GENERAL REVISION	3/16/11
ADDED TREES	3/14/13

**EASEMENT FOR INGRESS, EGRESS & PARKING  
 LANDS OF THE TOWN OF GUILDERLAND  
 STUYVESANT PLAZA  
 TOWN OF GUILDERLAND, ALBANY COUNTY, NY**

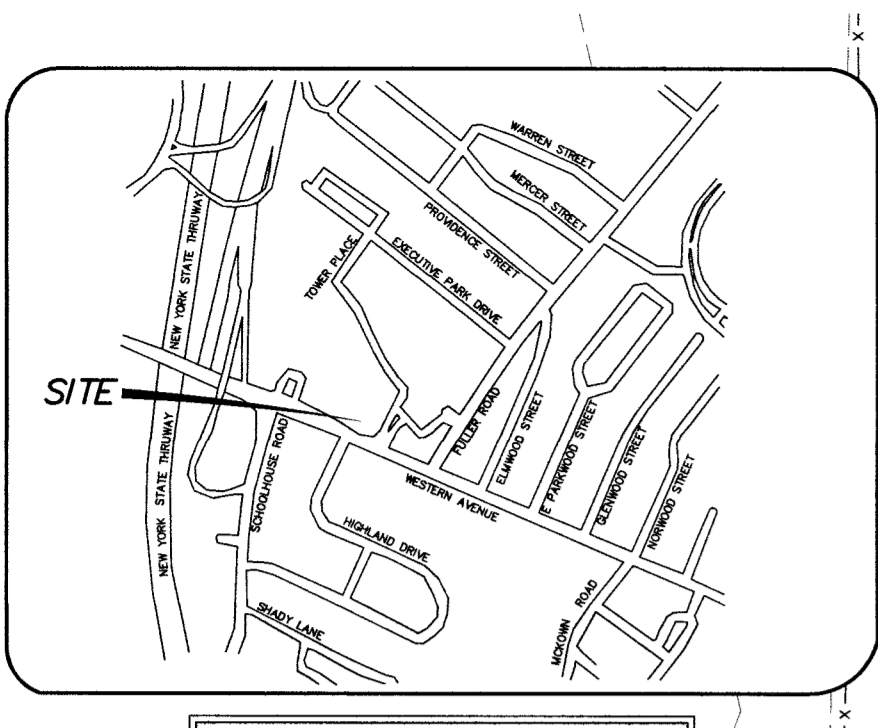
FILE: 090063

SCALE: 1"=50'

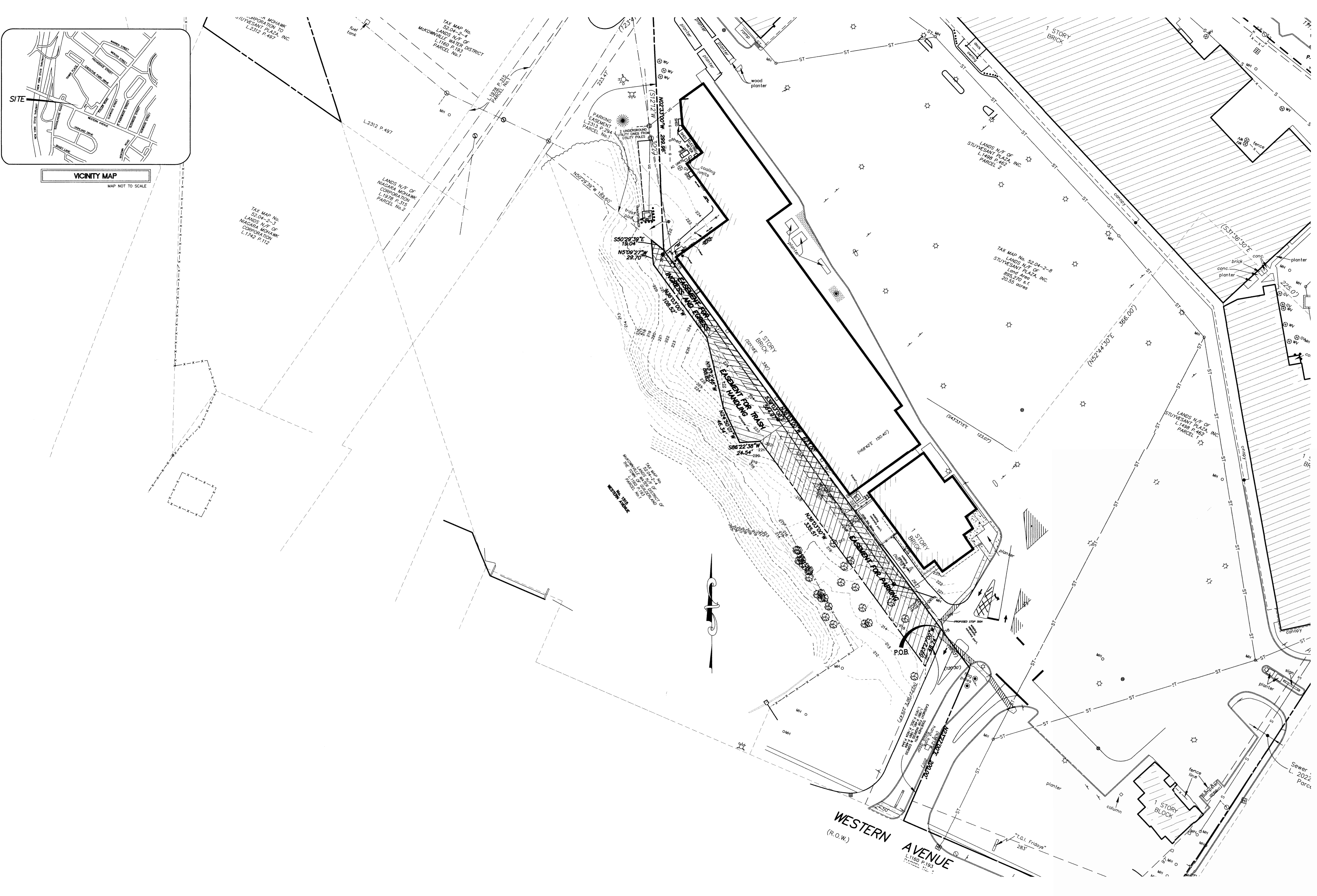
CWK: DBI

DATE: 4/22/09

090063-6



**VICINITY MAP**  
 MAP NOT TO SCALE



FOR MUNICIPAL APPROVAL ONLY-NOT INTENDED FOR CONSTRUCTION