

ALBANY, N. Y., SUNDAY, APRIL 8, 1928

IMPROVEMENT LEAGUE TRANSFORMS THINGS AT M'KOWNVILLE



McKownsville Views

BODY ORGANIZED 4 YEARS AGO AND WINS PROGRESS

Obtains Gas for Community of 200 Homes Out Western Avenue.

HELPS TRANSPORTATION

Boasts Own Fire Department With 60 Members and Pumper.

AIDS PAVING PLAN

Association Seeks to Restrict Settlement to Home Owners.

By WILLIAM W. TYLER.

Occupying a unique place in the history of Albany, although actually a part of the city, McKownsville, that small community of 200 homes on either side of Western avenue beyond the city line, within the last fifteen years has progressed from a farm country to its present active state.

Enjoying every convenience which they could possibly find within the city, the residents of McKownsville have preferred that it retain its identity and because of this we find an active, bustling little community, linked with Albany in spirit, but determined to manage its own affairs—and doing it wisely and well.

The history of McKownsville, were one but to pass a few hours in conversation with some of the "old-timers," would present a colorful story, one worthy of the telling because of the link which it forms between the Albany of today and that of the past.

Days Before Canal.

That history recalls the days before the first rail was laid through the Hudson or Mohawk valleys and when the Erie canal was yet the dream of a few men, and they accused of visionary tendencies. McKownsville then was but one huge farming space, the homestead of the McKown family.

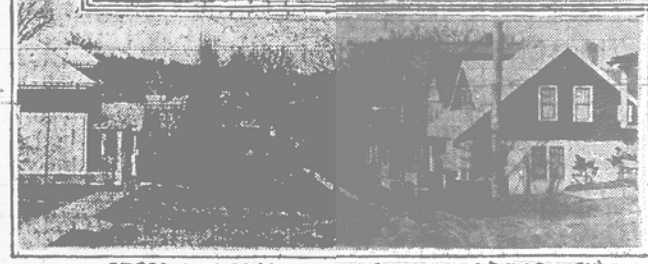
BUILDING TOTALS
\$1,500,000,000 IN
4 MONTHS OF 1928

Increase of 4 Per Cent Noted
Over Same Period of
Last Year

Revival in Crafts From Modern Low Ebb

Congress Leader Asks Nation-Wide Raise in Standards to Lift Vocations From Slump.

Nation-wide improvement which it is held by the community and bring the prestige that always comes to any organization from worthy altruistic accomplishment. "The value of this work and its far reaching influence affecting the happiness and character of thousands of men—its unlimited field of application."



ARCADIA STREET. LOOKING TOWARD WESTERN AVE.



SECTION OF WAVERLY PLACE